



PRODUCT MANUAL · 2026

# PROVIDE CUSTOMIZED SOLUTIONS FOR WINDOWS AND DOORS



## THE MANOR COLLECTION

Premium aluminum window & door systems



## THE CROWN COLLECTION

Aluminum-clad and copper-clad wooden systems

# CATALOG

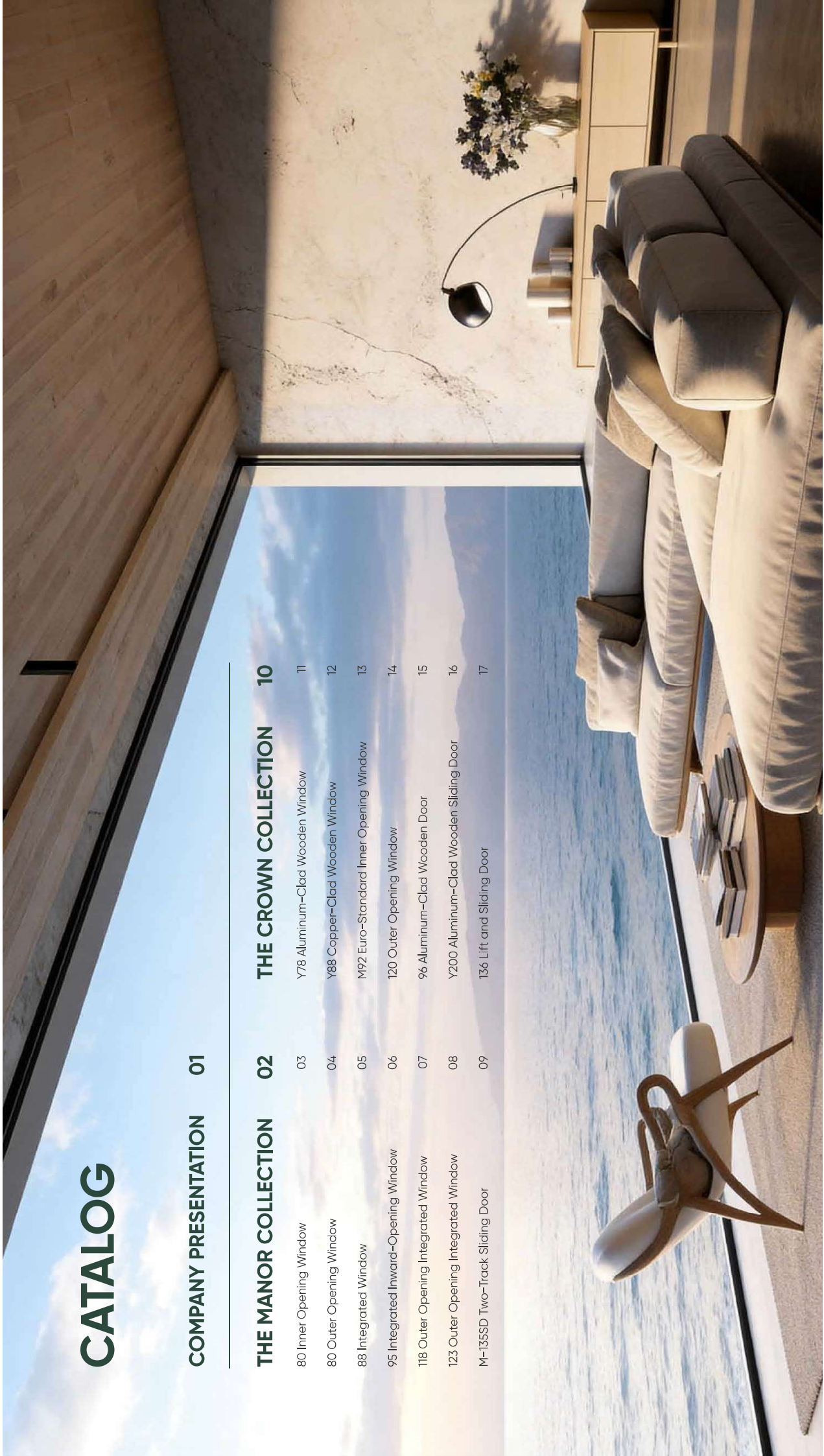
## COMPANY PRESENTATION 01

### THE MANOR COLLECTION 02

- 80 Inner Opening Window
- 80 Outer Opening Window
- 88 Integrated Window
- 95 Integrated Inward-Opening Window
- 118 Outer Opening Integrated Window
- 123 Outer Opening Integrated Window
- M-135SD Two-Track Sliding Door

### THE CROWN COLLECTION 10

- Y78 Aluminum-Clad Wooden Window
- Y88 Copper-Clad Wooden Window
- M92 Euro-Standard Inner-Opening Window
- 120 Outer Opening Window
- 96 Aluminum-Clad Wooden Door
- Y200 Aluminum-Clad Wooden Sliding Door
- 136 Lift and Sliding Door



# COMPANY PRESENTATION



FOCUS ON DOING WELL IN DOORS AND WINDOWS

## Our story:

Aperture Openings takes its name from the latin word "apertus" meaning an opening into or through something. Every door and window we make is a deliberate connection between interior life and the world beyond — the first door unlocked in the morning, the window opened for a breeze, the panel that turns a room into a terrace.

By pairing considered design with durable materials, we create openings that feel natural to use, sit at home in the architecture, and last for the life of the building.

## What we offer:

Our range covers aluminum windows and doors, integrated window-and-screen systems, slim side doors and sliding systems — a full vocabulary of openings for homes and architectural projects that want one consistent look from front door to rooftop. Every system is designed to work together, keeping lines and finishes coherent across every elevation, with options for thermal efficiency, acoustic comfort and security suited to different climates and building types.

The catalog is organized into two collections:

**Manor Collection** — premium all-aluminum windows and doors. Products engineered for inward, outward and sliding openings; the architectural backbone of any modern project.

**Crown Collection** — aluminum-clad and copper-clad wooden systems. Solid-wood interiors paired with metal exteriors, for projects that want the warmth of wood inside and the durability of metal outside.

"Every opening is an invitation." — Aperture Openings

COLLECTION ONE

# THE MANOR COLLECTION

Premium aluminum window & door systems



Engineered integrated aluminum systems for inward, outward and sliding openings — the architectural backbone of the catalogue, built for daylight, durability and clean sightlines.





# 80

## 80 Inner Opening Window

Inward tilt-and-turn aluminum window with slim sightlines for minimalist transparency.

### Product Feature

- 1. Frame & profile** Slim 80 mm aluminum frame engineered for inward tilt-and-turn operation with minimum visible width for maximum daylight.
- 2. Glazing 39mm** double-pane tempered insulated glass unit with warm-edge spacer for low U-value and clear vision.
- 3. Sealing & weather** Three-line EPDM sealing with continuous drainage channel keeps wind, rain and dust out of the interior.
- 4. Finish & color** Powder-coated aluminum in Starry Gray, Ink Black, Coffee Light plus custom RAL colors on request.

### Product Parameters

- Profile depth: 80 mm
- Glass: 39 mm tempered IGU
- Main Material: Extruded aluminum 6063-T5
- Sealing: 3-line EPDM

### Base Color

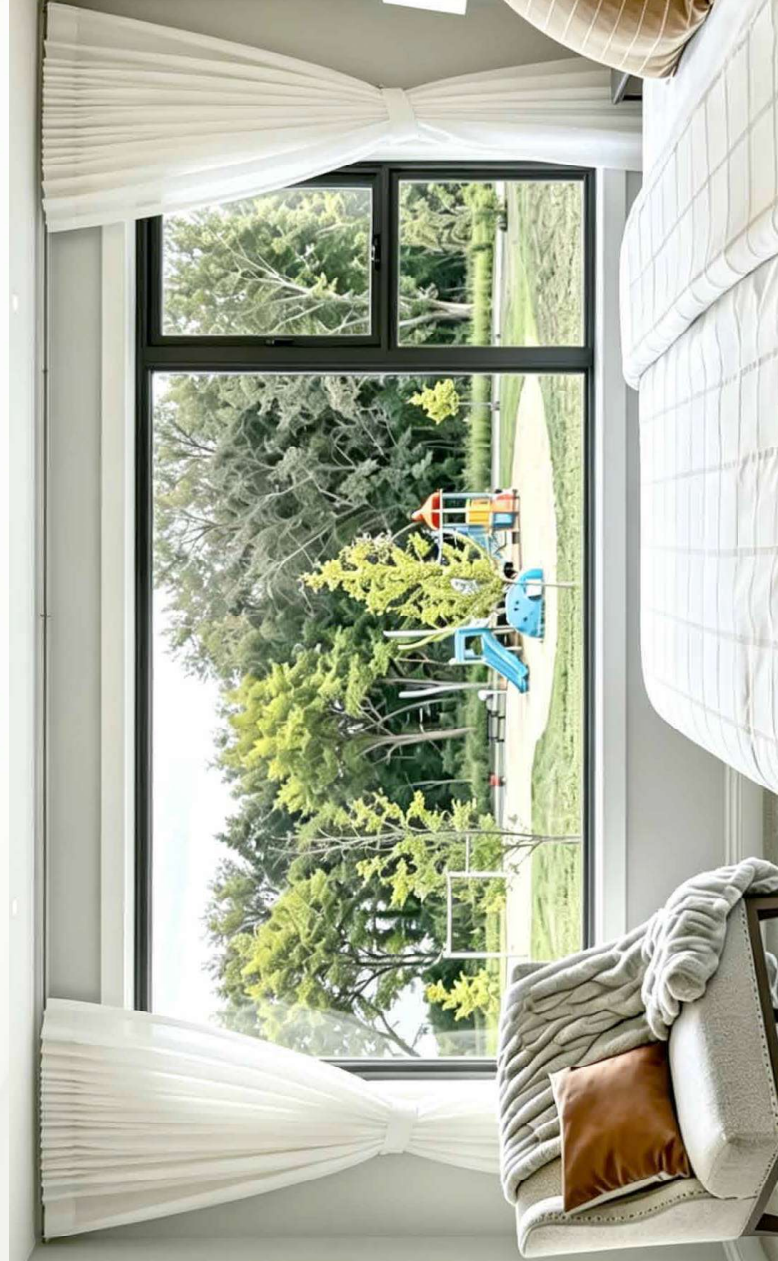
- Finish: Powder-coated - 4 standard colors + RAL
- Available in: Starry Gray, Ink Black, Coffee Light - custom RAL on request

### Opening Way

Inswing – tilt or turn

### Hardware

ROTO tilt-and-turn



# 80

## 80 Outer Opening Window

Outward casement aluminum window with flush facade lines and transparent vision.

### ■ Product Feature

1. **Frame & profile** Slim 80 mm aluminum frame configured for outward casement with a flat exterior face that sits flush against the wall.
2. **Glazing 39mm** double-pane tempered insulated glass unit with warm-edge spacer.
3. **Sealing & weather** Three-line EPDM sealing and concealed exterior drainage keep the sightline clean from outside.
4. **Finish & color** Powder-coated aluminum in Starry Gray, Ink Black, Coffee Light plus custom RAL colors on request.

### ● Product Parameters

- Profile depth: 80 mm
- Glass: 39 mm tempered IGU
- Main Material: Extruded aluminum 6063-T5
- Sealing: 3-line EPDM

### ● Base Color

- Finish: Powder-coated - 4 standard colors + RAL
- Available in: Starry Gray, Ink Black, Coffee Light - custom RAL on request

### ● Opening Way

Outswinging casement

### ● Hardware

Concealed outswinging casement



# 88

## 88 Integrated Window

88 mm integrated window with built-in screen – available operable or fixed in one profile.

### Product Feature

- 1. Frame & profile** 88 mm aluminum integrated frame; same profile available as operable inward tilt-and-turn or as a fixed picture window.
- 2. Glazing 43mm** insulated glass; both glazing and screen sashes open inward on the operable version for secure sealing and easy cleaning.
- 3. Sealing & weather** Hidden drainage on both versions with mechanical 8-point corner glue injection for reliable, weather-safe corners.
- 4. Hardware & operation** HOPE+HOPPE tilt-and-turn hardware plus magnetic self-returning screen sash with child-lock key (operable version only).
- 5. Finish & color** Powder-coated aluminum in Coffee, Sand Grey, Black Galaxy and additional metallic finishes.

### Product Parameters

- Profile depth: Frame 88 / Sash 69 mm
- Glass: 43mm IGU
- Main Material: Extruded aluminum 6063-T5
- Sealing: 8-point corner glue · hidden drainage

### Base Color

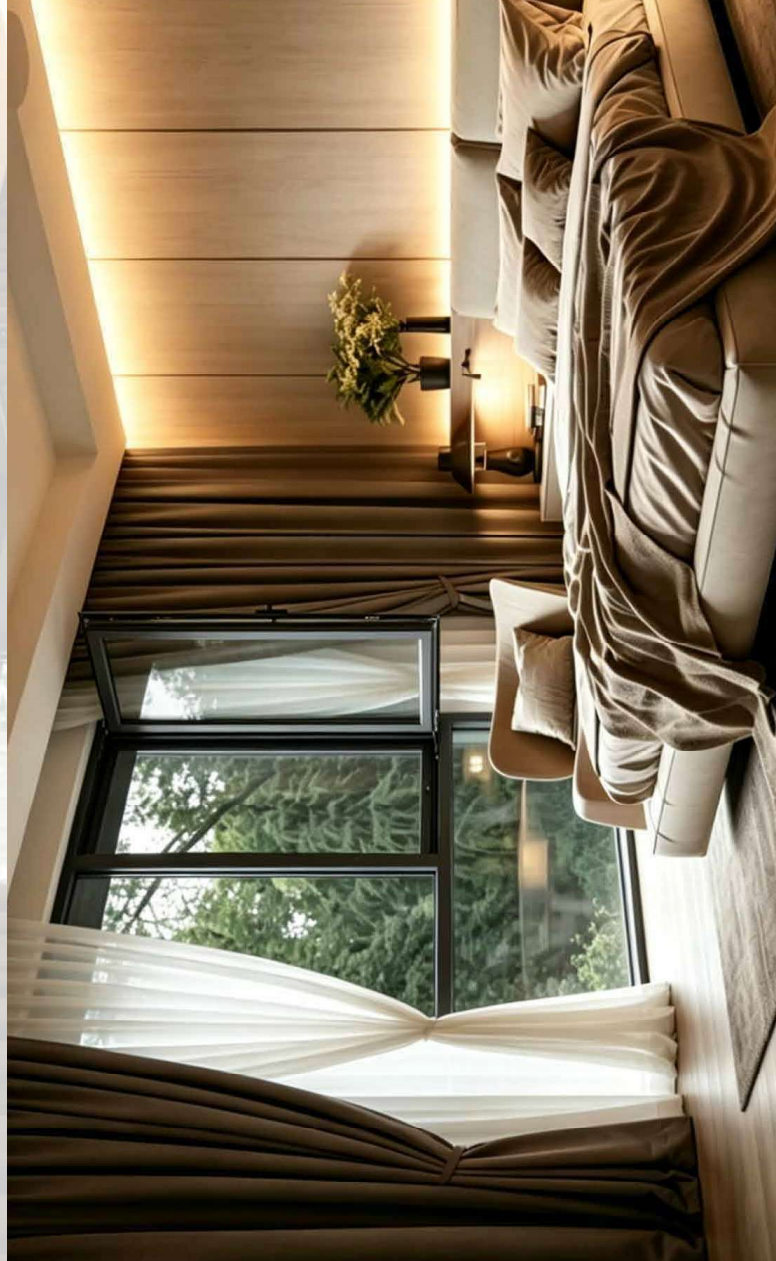
- Finish: Powder-coated · 3 standard colors
- Available in: Coffee, Sand Grey, Black Galaxy · metallic finishes

### Opening Way

Tilt-and-turn + screen, or Fixed

### Hardware

HOPE+HOPPE (operable only)



# 95

## 95 Integrated Inward-Opening Window

Slim 95 mm flush-frame inward window with multi-cavity thermal insulation and integrated screen.

### Product Feature

- 1. Frame & profile** Slim 95 mm flush-frame profile with multi-cavity construction for superior thermal break performance.
- 2. Glazing 43mm** laminated insulated glass with warm-edge spacer for high acoustic and thermal performance.
- 3. Sealing & weather** Multi-line EPDM seals with concealed sloped drainage; integrated screen sash protects against insects without breaking the sightline.
- 4. Hardware & operation** ROTO inward tilt-and-turn hardware with concealed hinges and integrated screen lock.
- 5. Finish & color** Powder-coated aluminum in Starry Gray, Ink Black, Coffee Light plus custom RAL colors on request.

### Product Parameters

- Profile depth: 95 mm
- Glass: 43 mm laminated IGU
- Main Material: Extruded aluminum 6063-T5
- Sealing: Multi-line EPDM · concealed drainage

### Base Color

- Finish: Powder-coated · 3 standard colors + RAL
- Available in: Starry Gray, Ink Black, Coffee Light · custom RAL on request

### Opening Way

Inswing — tilt or turn + screen

### Hardware

ROTO tilt-and-turn



# 118

## 118 Outer Opening Integrated Window

Flush slim-frame outward window with a narrow center mullion and integrated screen.

### Product Feature

- 1. Frame & profile** 118 mm flush slim-frame profile with a narrow center mullion that maximizes glass area across paired sashes.
- 2. Glazing 39mm** laminated insulated glass for thermal break and acoustic insulation.
- 3. Sealing & weather** Multi-line EPDM sealing with hidden exterior drainage, clean facade lines from outside.
- 4. Hardware & operation** Outward casement / top-hung hardware with concealed hinges and integrated screen sash.
- 5. Finish & color** Powder-coated aluminum in Starry Gray, Ink Black, Coffee Light plus custom RAL colors on request.

### Product Parameters

- **Profile depth:** 118 mm
- **Glass:** 39 mm laminated IGU
- **Main Material:** Extruded aluminum 6063-T5
- **Sealing:** Multi-line EPDM · hidden drainage

### Base Color

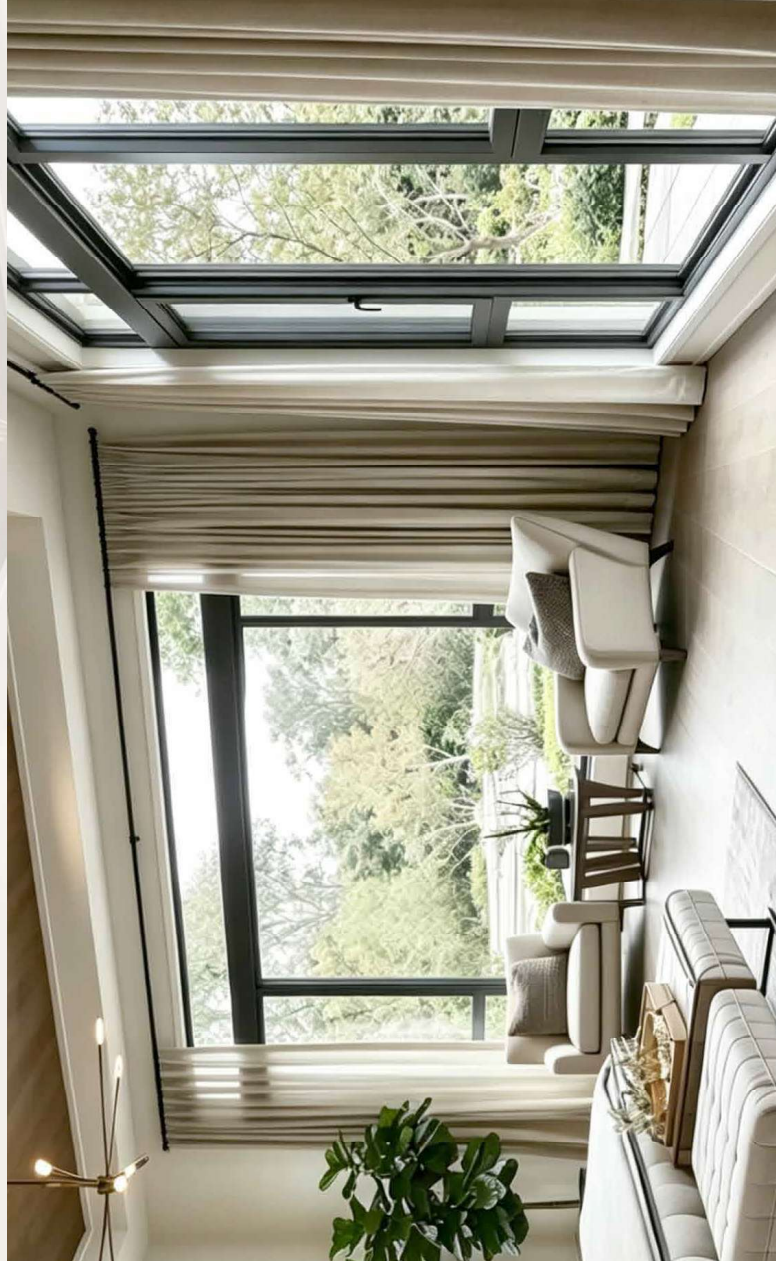
- **Finish:** Powder-coated · 3 standard colors + RAL
- **Available in:** Starry Gray, Ink Black, Coffee Light · custom RAL on request

### Opening Way

Outswing casement + screen

### Hardware

Concealed casement / top-hung



# 123

## 123 Outer Opening Integrated Window

One-piece sulfide-welded outward window with integrated screen for the most demanding facades.

### Product Feature

- 1. Frame & profile** 123 mm sulfide-welded one-piece aluminum frame for maximum structural rigidity and weather defense.
- 2. Glazing 39mm** laminated insulated glass with warm-edge spacer.
- 3. Sealing & weather** Multi-line EPDM with sloped concealed drainage; one-piece weld eliminates corner leak paths.
- 4. Hardware & operation** Outward casement / top-hung hardware with concealed hinges and integrated screen sash.
- 5. Finish & color** Powder-coated aluminum in Starry Gray, Ink Black, Coffee Light plus custom RAL colors on request.

### Product Parameters

- **Profile depth:** 123 mm
- **Glass:** 39 mm laminated IGU
- **Main Material:** Extruded aluminum 6063-T5 · sulfide-welded
- **Sealing:** Multi-line EPDM · concealed drainage

### Base Color

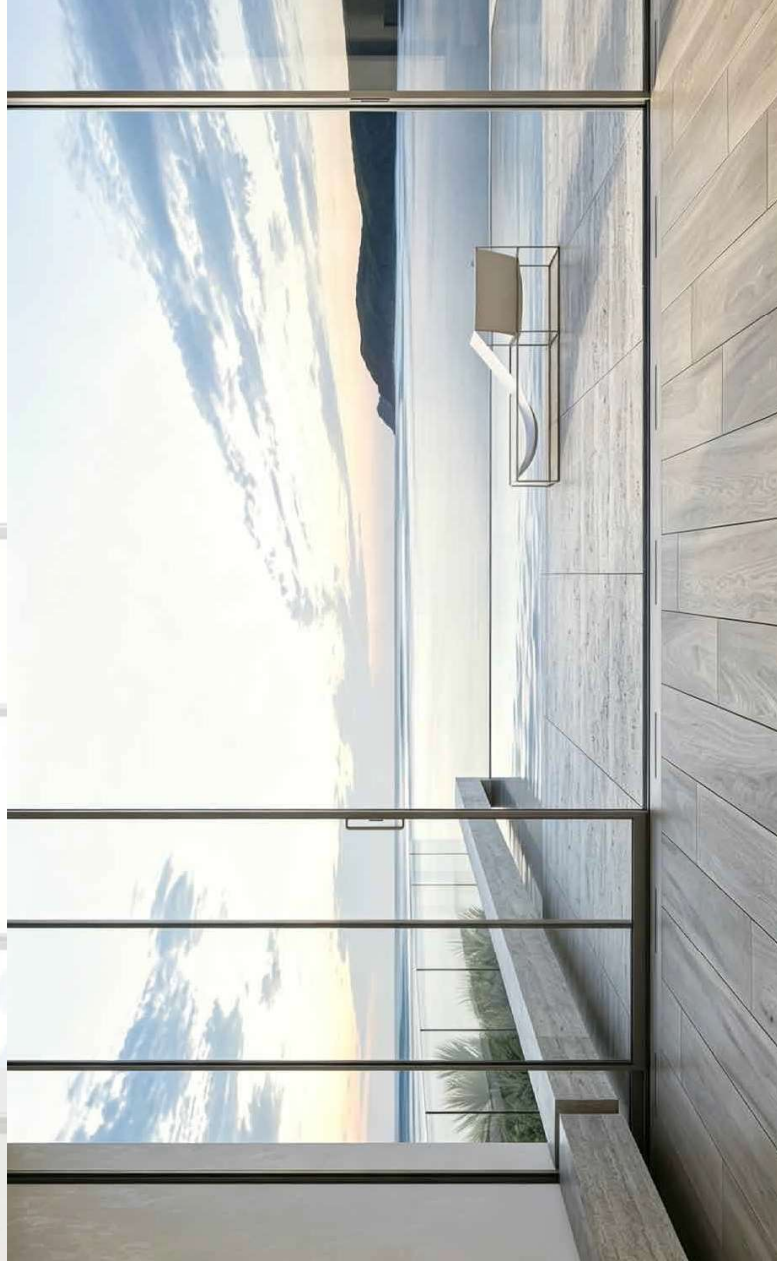
- **Finish:** Powder-coated · 3 standard colors + RAL
- **Available in:** Starry Gray, Ink Black, Coffee Light · custom RAL on request

### Opening Way

Outswing casement + screen

### Hardware

Concealed casement / top-hung



# M-135SSD

## M-135SSD Two-Track Sliding Door

Heavy-gauge two-track sliding door for large openings with hidden drainage and embedded sealing.

### Product Feature

- 1. Frame & profile** 135 mm two-track aluminum sliding frame transported as one piece and assembled on site for dimensional accuracy.
- 2. Glazing** Double 33 mm IGU (5+23A+5) or triple 33 mm IGU (5+9A+5+9A+5) for thermal and acoustic performance.
- 3. Sealing & weather** Composite EPDM foam seal on a firmly installed base; embedded closed leaf with 30 mm medium-narrow edge for a clean visual line.
- 4. Hardware & operation** HOPO sliding hardware supports panels up to 300 kg per leaf; 8-point corner glue method for stronger joints.
- 5. Finish & color** Powder-coated aluminum in Starry Gray, Ink Black, Coffee Light plus custom RAL colors on request.

### Product Parameters

- **Profile depth:** 135 mm (two-track)
- **Glass:** Double 33 mm or triple 33 mm IGU
- **Main Material:** Extruded aluminum 6063-T5
- **Sealing:** Composite EPDM foam - hidden drainage

### Base Color

- **Finish:** Powder-coated - 3 standard colors + RAL
- **Available in:** Starry Gray, Ink Black, Coffee Light - custom RAL on request

### Opening Way

Two-track horizontal sliding

### Hardware

HOPO sliding - 300 kg/leaf

# THE CROWN COLLECTION

Aluminum-clad and copper-clad wooden systems



Flagship systems pairing solid-wood interiors with aluminum or copper exteriors — heritage warmth inside, weather-tough metal outside, for projects that demand both craft and performance.



# Y78

## Y78 Aluminum-Clad Wooden Window

Aluminum exterior over solid wood interior — weather-resistant outside, warm wood inside.

### Product Feature

- 1. Frame & profile** 78 mm aluminum-clad wooden frame; mortise-and-tenon lap joint between aluminum exterior shell and solid wood interior.
- 2. Glazing** 5\*20A+5 mm tempered insulated glass unit with warm-edge spacer.
- 3. Sealing & weather** Uneven-frame triple sealing line for superior air and water tightness; welded aluminum corners for soft, clean exterior lines.
- 4. Hardware & operation** ROTO inswing tilt-and-turn hardware for smooth, secure single-handle operation.
- 5. Finish & color** German Lemars paint system on the interior wood (Oak, Amber, Walnut + 7 more); fluorocarbon exterior

### Product Parameters

- **Profile depth:** 78 mm
- **Glass:** 5\*20A+5 mm tempered IGU
- **Main Material:** Aluminum 6603-T5 + solid wood
- **Sealing:** Uneven-frame triple seal

### Base Color

- **Finish:** Lemars paint (interior) · Fluorocarbon (exterior)
- **Available in:** Interior: Oak, Amber, Walnut + 7 more · Exterior: Coffee, Gray, Black

### Opening Way

Inswing / Tilt and Turn

### Hardware

ROTO tilt-and-turn



# Y88

## Y88 Copper-Clad Wooden Window

Copper exterior over solid wood interior – heritage craftsmanship with modern thermal performance.

### Product Feature

- 1. Frame & profile** 88 mm copper-clad wooden frame; mortise-and-tenon construction joins copper exterior to solid wood interior.
- 2. Glazing** 5x20A+5 mm tempered insulated glass unit with warm-edge spacer.
- 3. Sealing & weather** Triple weather stripping with concealed drainage channels for full weather protection; seamless welded copper corners.
- 4. Hardware & operation** ROTO inswing tilt-and-turn hardware for smooth, secure single-handle operation.
- 5. Finish & color** Three primer coats and two topcoats of German Remmers paint on interior wood (Oak, Amber, Walnut, Ink Black + 7 more); natural-patina copper exterior.

### Product Parameters

- **Profile depth:** 88 mm
- **Glass:** 5x20A+5 mm tempered IGU
- **Main Material:** Copper alloy + solid wood
- **Sealing:** Triple weather strip - concealed drainage

### Base Color

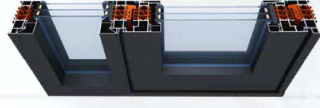
- **Finish:** Remmers paint (interior) · Copper alloy (exterior)
- **Available in:** Interior: Oak, Walnut, Ink Black + 7 more · Exterior: natural-patina copper

### Opening Way

Inswing – tilt or turn

### Hardware

ROTO tilt-and-turn



# M92

## M92 Euro-Standard Inner Opening Window

Euro-standard 92 mm inswing window – single flat or tilt-and-turn with a 41 mm thermal break.

### Product Feature

- 1. Frame & profile** 92 mm 6063-T5 aluminum profile (1.8 mm wall) with frame and sash flush on both interior and exterior for clean facade sightlines.
- 2. Glazing** 5+20A+5 mm insulated glass unit with warm-edge spacer; supports inswing single flat or tilt-and-turn sash.
- 3. Sealing & weather** Triple sealing lines plus a one-piece bent gasket – no joints, no gaps; full corner glue injection delivers concrete-grade strength.
- 4. Hardware & operation** German ROTO multi-point hardware with ROTO handle; two operating modes – inswing flat or inswing tilt-and-turn.
- 5. Finish & color** Powder-coated aluminum in Coffee Brown, Starry Gray, Coffee Crystal plus custom colors on request.

### Product Parameters

- **Profile depth:** 92 mm
- **Glass:** 5+20A+5 mm IGU
- **Main Material:** Extruded aluminum 6063-T5 · 1.8 mm wall
- **Sealing:** Triple seal · one-piece bent gasket

### Base Color

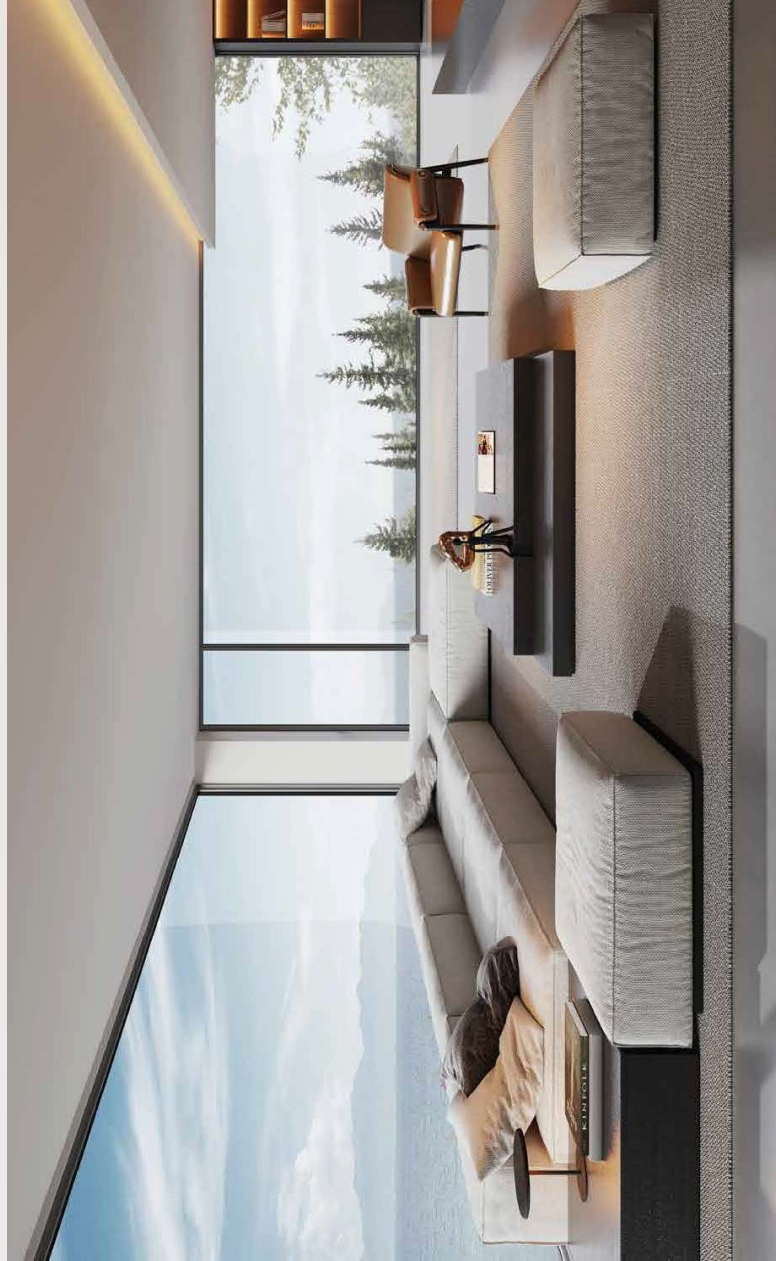
- **Finish:** Powder-coated · 3 standard colors + custom
- **Available in:** Coffee Brown, Starry Gray, Coffee Crystal · custom colors on request

### Opening Way

Inswing flat / tilt-and-turn

### Hardware

German ROTO + ROTO handle



# 120

## 120 Outer Opening Window

Slim 84,5 mm sightline outward window with five-seal protection and integrated screen.

### Product Feature

- 1. Frame & profile** 120 mm aluminum-clad wooden frame with slim 84,5 mm sightline; dual-X insulation strip provides single-piece thermal break.
- 2. Glazing** 5G+20A+5G mm IGU with black spacer for clean sightlines.
- 3. Sealing & weather** Five-seal design between sash and frame delivers outstanding air and water tightness; concealed drainage.
- 4. Hardware & operation** 90° hardware for outward casement / outer top-hung with HOPO option; supports sash sizes 400–800 x 800–1800 mm up to 80 kg.
- 5. Finish & color** Powder-coated in Starry Gray, Ink Black, Coffee Light plus magnetic / motorized blinds available for integrated shading.

### Product Parameters

- Profile depth: 120 mm (Frame) · 71,4 mm (Sash)
- Glass: 5G+20A+5G mm IGU (black spacer)
- Main Material: Extruded aluminum + solid wood
- Sealing: 5-seal design · dual-X insulation strip

### Base Color

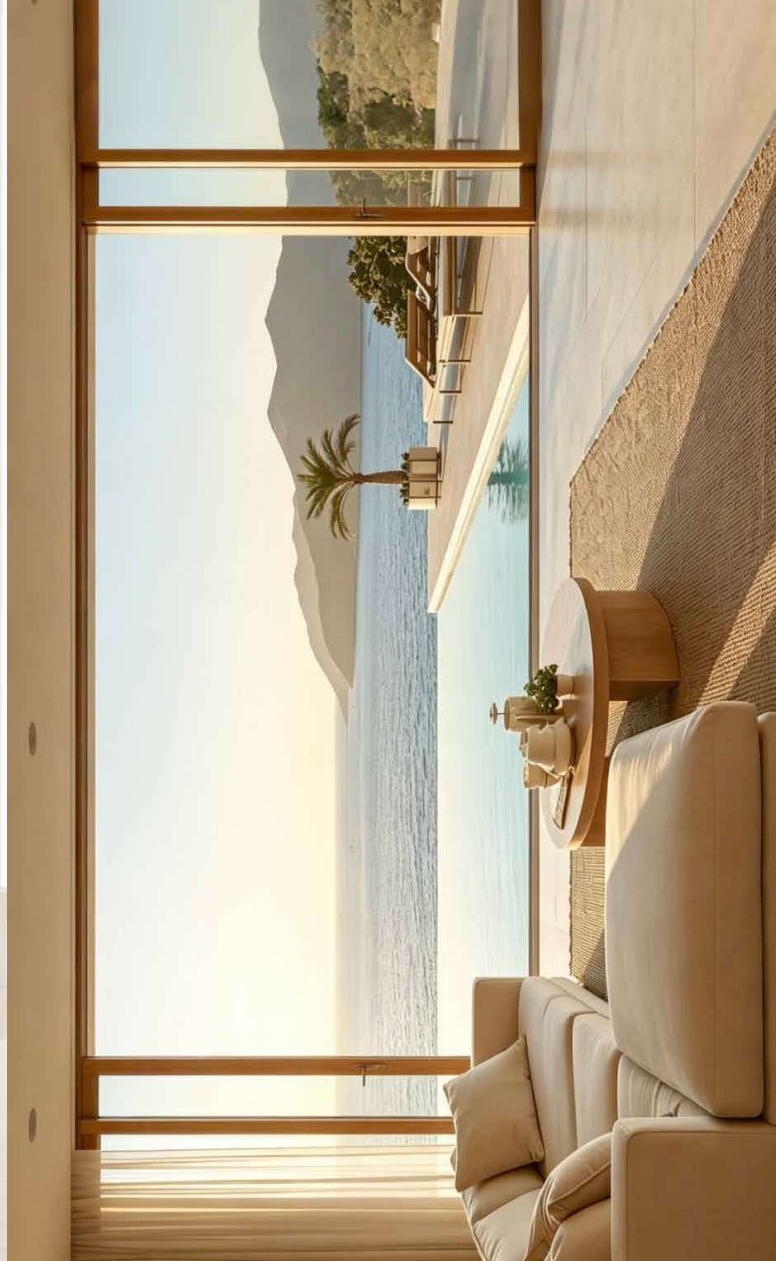
- Finish: Powder-coated · 3 standard colors
- Available in: Starry Gray, Ink Black, Coffee Light · integrated blinds optional

### Opening Way

Outswinging casement / outer top-hung

### Hardware

Saroke 90° / 80 kg · HOPO option



# 96

## 96 Aluminum-Clad Wooden Door

Aluminum exterior over solid wood interior – front-door scale with full thermal performance.

### ■ Product Feature

1. **Frame & profile** 96 mm aluminum-clad wooden door frame; mortise-and-tenon construction joins aluminum exterior to solid wood interior.
2. **Glazing** 5+20A+5 mm tempered or laminated IGU optional; solid-panel configurations also available.
3. **Sealing & weather** Triple weather stripping with hidden threshold drainage and welded aluminum corners for soft, clean exterior lines.
4. **Hardware & operation** ROTO multi-point door lock with concealed hinges for smooth, secure operation.
5. **Finish & color** Interior wood in German Lemaris paint (Oak, Amber, Walnut + 7 more); fluorocarbon exterior in Coffee, Gray or Black.

### ● Product Parameters

- **Profile depth:** 96 mm
- **Glass:** 5+20A+5 mm tempered/laminated IGU
- **Main Material:** Aluminum 6603-T5 + solid wood
- **Sealing:** Triple weather strip · hidden drainage

### ● Base Color

- **Finish:** Lemaris paint (interior) · Fluorocarbon (exterior)
- **Available in:** Interior: Oak, Amber, Walnut + 7 more · Exterior: Coffee, Gray, Black

### ● Opening Way

Inswing / outswing entry door

### ● Hardware

ROTO multi-point lock



# Y200

## Y200 Aluminum-Clad Wooden Sliding Door

Three-track sliding door with integrated screen — aluminum exterior weather shield, solid wood interior warmth.

### Product Feature

- 1. Frame & profile** 200 mm aluminum-clad wooden frame configured as a three-track slider; thermal-optimized dual-color profile.
- 2. Glazing** 5x20A+5 mm tempered IGU with warm-edge spacer.
- 3. Sealing & weather** Watertight welded aluminum corner construction and flush-fit threshold with concealed drainage channels.
- 4. Hardware & operation** Three sliding tracks plus integrated screen track for flexible openings and year-round ventilation.
- 5. Finish & color** Interior wood in German Remmers paint (Oak, Amber, Walnut + 7 more); fluorocarbon exterior in Coffee, Gray or Black.

### Product Parameters

- **Profile depth:** 200 mm
- **Glass:** 5x20A+5 mm tempered IGU
- **Main Material:** Aluminum 6063-T5 + solid wood
- **Sealing:** Watertight welded corners · flush threshold

### Base Color

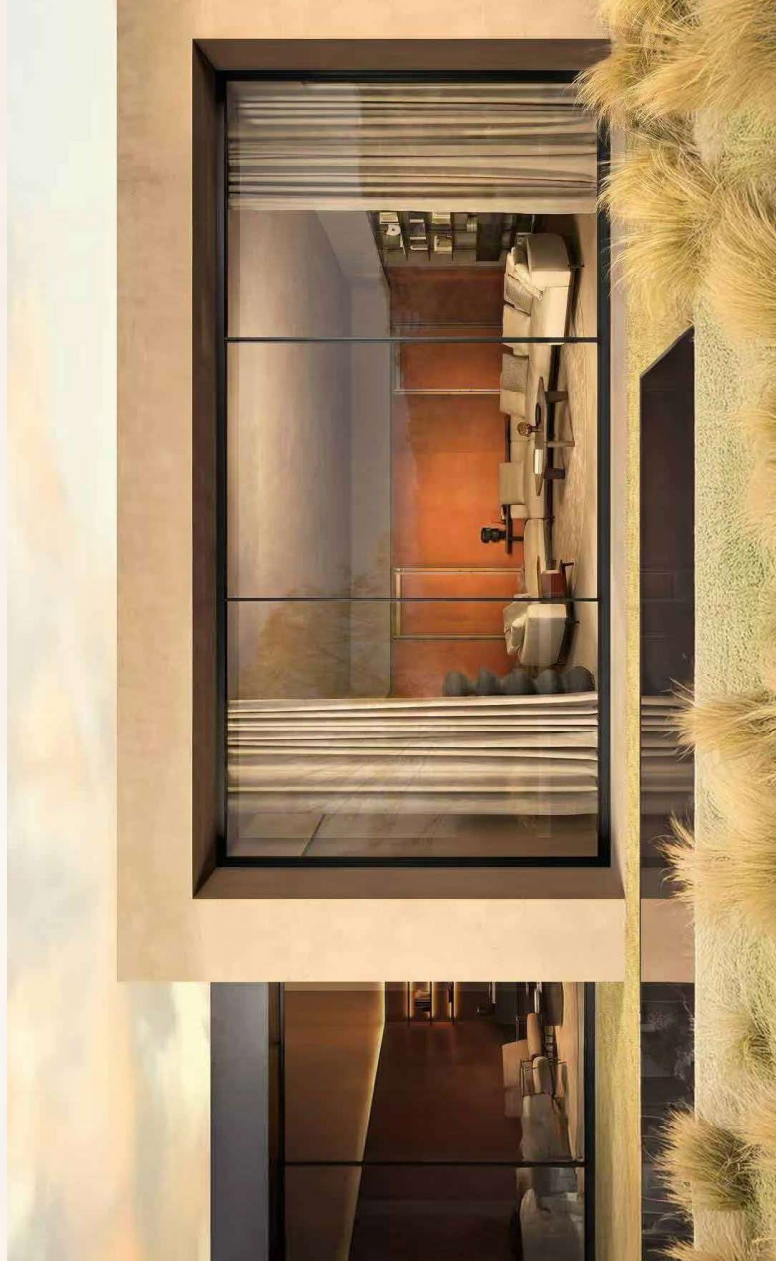
- **Finish:** Remmers paint (interior) · Fluorocarbon (exterior)
- **Available in:** Interior: Oak, Amber, Walnut + 7 more · Exterior: Coffee, Gray, Black

### Opening Way

Three-track horizontal sliding + screen

### Hardware

ROTO 3-track sliding + screen



# 136

## 136 Lift and Sliding Door

Extra-large lift-and-slide door – single panels up to 6 m x 4.5 m for panoramic openings.

### Product Feature

- 1. Frame & profile** 136 mm aluminum-clad wooden lift-and-slide frame engineered for single panels up to 6 m x 4.5 m and 400 kg.
- 2. Glazing** Double or triple IGU options up to 50 mm total thickness for thermal and acoustic performance.
- 3. Sealing & weather** Lift mechanism compresses sash onto multi-line EPDM seals when closed; concealed drainage in the threshold.
- 4. Hardware & operation** HOPO lift-and-slide hardware with single-handle 180° rotation; supports manual or motorized operation.
- 5. Finish & color** Interior wood in German Remmers paint (Oak, Amber, Walnut + 7 more); fluorocarbon exterior. In Coffee, Gray or Black.

### Product Parameters

- Profile depth: 136 mm
- Glass: Double / triple IGU up to 50 mm
- Main Material: Aluminum 6603-T5 + solid wood
- Sealing: Lift-compressed multi-line EPDM

### Base Color

- Finish: Remmers paint (interior) · Fluorocarbon (exterior)
- Available in: Interior: Oak, Amber, Walnut + 7 more · Exterior: Coffee, Gray, Black

### Opening Way

Lift-and-slide · max 6m x 4.5m

### Hardware

HOPO lift-and-slide · 400 kg/leaf



EVERY OPENING IS AN INVITATION.